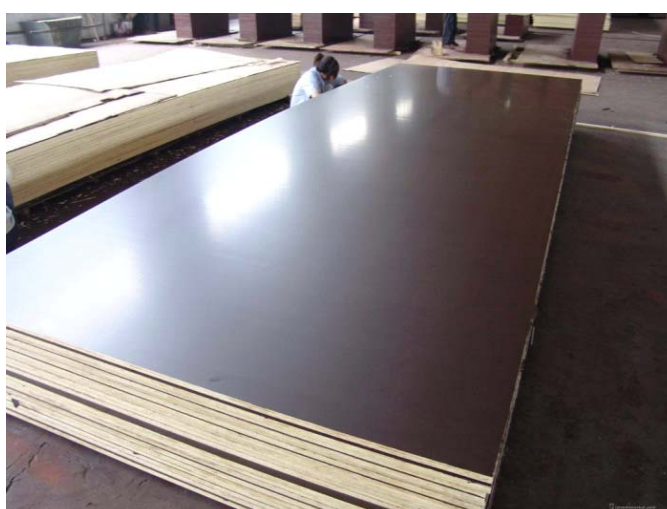
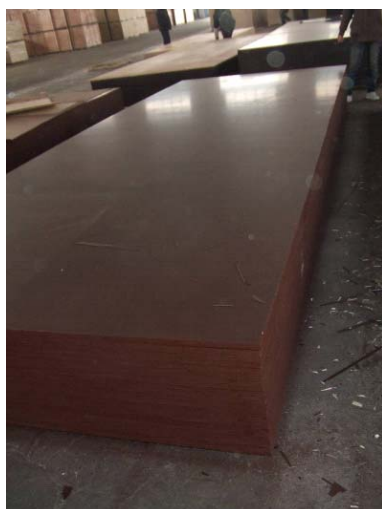


FORMWORKS (FFP):



Description:

Plywood manufactured by pressing on standard plywood plate special paper impregnated with resin – so called film. Depending on the type of resin used to impregnate paper, we distinguish phenol films and melamine films. The process of pressing of the film runs in high temperatures and under high pressure. Resin from the film penetrates into wood giving the effect of a very tight bond with underlying plywood plate.

The type of film used determines main types of film faced plywood we produce: plywood with phenol films and plywood with melamine films. There are also a few additional brands directed to specific groups of clients.

Film faced plywood is resistant to mechanical damages, abrasion, moisture and water, high temperature, bursting and atmospheric conditions. One must remember however, that this applies only to face and back of the panel. The edges are vulnerable to water penetration same as standard plywood and must be protected by means of painting or other.

Film:

Film: Imported Dynea brown, black or other color film, or domestic brown, black or other color film, or **Wiremesh** with different design pattern, like small square, diamond, Double Grain or Single Grain or Hexagonal / with matte points patterns. Dynea or StoraEnso 120-160-200g/m² brown color film, Domestic 180-240g/m² black color film

Film Grade Available: A/A grade, 120gr/m², 180gr/m², 240gr/m² Dynea film / Stora_Enso Film / China Local Film; Color including Brown / Black / Yellow film with or without logo etc.

Core:

Poplar, Tropical Hardwood / Eucalyptus, or birch, poplar/Hardwood Combi, Poplar/Birch Combi, and so on, thickness ranging from 1.2mm to 3.6mm

Glue

✖ **exterior with white glue line:** on the basis of melamine-urea-formaldehyde (MUF) glue, for use in humid conditions (acc. to EN 636, technical class EN 636-2),

? **exterior:** on the basis of phenol-formaldehyde (PF) glue, for use in exterior conditions (acc. to EN 636, technical class EN 636-3).

Glue: WBP Phenolic E1 glue, WBP Melamine E1 glue;

Common Size: **2440x1220mm (LXW)**
2500x1250mm (LXW)
3000x1500mm (LXW) or as requested.

Common Thickness	Common PACK QTY (PCS/Crate)		Plies
	40'HQ (18 Packs)	Breakbulk Vessel	
4	225	150	5
8	110	75	7
12	75	50	9
15	60	40	11
18	50	35	13
21	43	30	15
Density:	530 to 720 kg/m ³ (depending on type of core veneers used)		
Packing	Standard seaworthy packing		

Construction: shuttering and building of concrete formworks, in industrial buildings for floors and working platforms in production units, platforms of scaffoldings, lining or panelling of walls, construction of inner walls, floors and ceilings, building facades, etc.

Furniture: production of home-, office-, school furniture.

Production of cars, trailers, semitrailers: trailer and lorry floors and walls, container floors, interior finishing in public transportation, parts of car interior, etc.

Usage:

Packaging industry: boxes, cases, etc.

Shipbuilding industry: walls and floors of cargo holds, floors of car decks, parts of ship's and yacht's interior finishing, etc.

Other: manufacture of playground structures, traffic signs and billboards, loudspeaker boxes, and many others.